

Effects = shimmer + pearlescent + prismatic

INTERIOR AND EXTERIOR SURFACING
INTERIOR AND EXTERIOR SIGNAGE

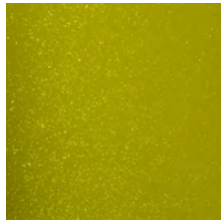
SHIMMER SERIES (NEW)



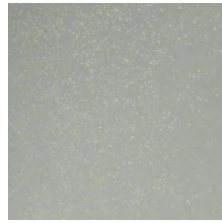
NAS Blue Silver



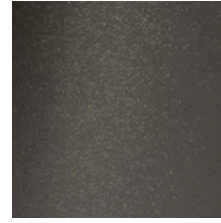
NNG Orange Gold



NLG Lime Gold



NTS Stone Silver



NCS Charcoal Silver

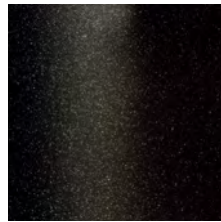


NWS White Silver

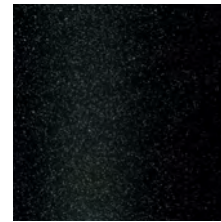
Effects Color Line

New from ALPOLIC

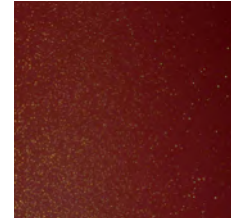
Pearlescent and Prismatic finishes are now
joined by our new Shimmer Series.



BKG Black Gold



BKS Black Silver



NBG Burgundy Gold

PEARLESCENT SERIES



DQO Pearlescent
Orange



SPY Eclipse



BNP Frost

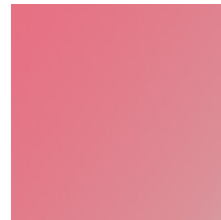
PRISMATIC SERIES



SAP Prismatic Green



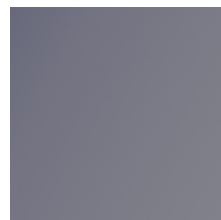
MRT Magma



ERP Blush



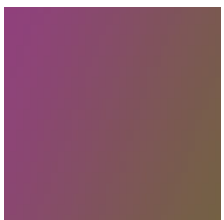
RXT Harvest Moon



RXP Dusk



SBP Dragonfly



SGP Junebug



SNP Marsh



SCP Mesa



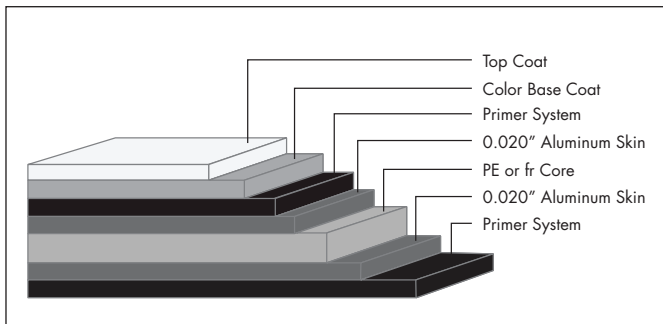
SJP Lagoon

ALPOLIC[®]
M A T E R I A L S

Let's Build

SURFACE TREATMENT

ALPOLIC's Effects Color Line consists of shimmer, pearlescent, and prismatic color panels are available with a FEVE LUMIFLON™ finish, a fluorocarbon paint system that features excellent durability and weathering for architectural needs. A PVDF finish is available as a custom request. All 4mm Prismatic colors are custom manufactured.



STANDARD PANELSIZE

Standard widths are 50" (1270mm) and 62" (1575mm) and lengths of 146" (3708mm) and 196" (4978mm). Panels can be manufactured in 4mm or 6mm thickness. Standard crate is 50 pieces. Custom lengths, widths, and thickness available. Please contact ALPOLIC® Customer Service for additional information.

FINISH TOLERANCE

Color: DE 2.5 max from standard
Gloss: Nominal +/- 10 units

PRODUCT TOLERANCE

Width: ± 0.08" (2mm)
Length: ± 0.16" (4mm)
Thickness: 4mm ± 0.008" (0.2mm)
6mm ± 0.012" (0.3mm)
Bow: maximum 0.5% of length and/or width
Squareness: maximum 0.2" (5mm)
Peel Strength: >22 in lb/in (ASTM D1781)

ALPOLIC® material is trimmed and squared with cut edges to offer the best panel edge conditions in the industry.

FIRE PERFORMANCE

ALPOLIC®/fr Effects Color Line finished panels with a mineral filled core have been tested by independent testing laboratories using nationally recognized tests.

This material meets all requirements of the International Building Code for non-combustible construction:

IBC Listed

UL Listed

Please visit www.alpolic-americas.com/frcore or call technical support for complete report listings and additional information.

WARRANTY

Standard panel warranty: 10 Year
Finish warranty: 20 Year

Call ALPOLIC® Customer Service for exclusions and warranty details.

PRODUCT NOTES

- Panels should be stored flat in a dry, indoor environment.
- Fabricate panels at temperatures above 55°F.
- Protective film should be removed from panels soon after installation.
- Please refer to ALPOLIC®/fr Painted ACM Fabrication Manual for routing and fabrication recommendations.
- Crating fees apply to orders for less than standard piece crate.
- For best color consistency, ALPOLIC® recommends ordering all required Effects paint finish panels at one time and maintaining consistent panel orientation during installation.
- Different lots of Effects finishes should not be mixed onbuilding elevation.

FOR TECHNICAL INFORMATION,
PLEASE CALL 1.800.422.7270

Mitsubishi Chemical Composites America Inc.

ALPOLIC Division

401 Volvo Parkway, Chesapeake, VA 23320, U.S.A.

Telephone: 800-422-7270 (from US and Canada)

Facsimile: 1-757-436-1896

Email: info@alpolic.com

URL: <http://www.alpolic-americas.com>