

REVISIONS			
REV	DESCRIPTION	DATE	APPROVED

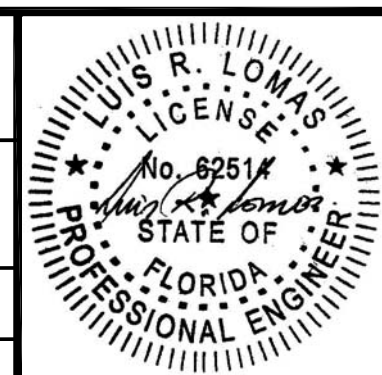
NOTES:

1. THE PRODUCT SHOWN HEREIN IS DESIGNED AND MANUFACTURED TO COMPLY WITH REQUIREMENTS OF THE FLORIDA BUILDING CODE INCLUDING THE HVHZ.
2. METAL FRAMING TO BE DESIGNED AND ANCHORED TO PROPERLY TRANSFER ALL LOADS TO STRUCTURE. FRAMING STRUCTURE IS THE RESPONSIBILITY OF THE ARCHITECT OR ENGINEER OF RECORD.
3. SHEATHING TO BE 1/2" THICK MINIMUM AND SECURED TO FRAMING TO PROPERLY TRANSFER ALL LOADS TO STRUCTURE. FRAMING STRUCTURE IS THE RESPONSIBILITY OF THE ARCHITECT OR ENGINEER OF RECORD.
4. PANEL THICKNESS TO BE 4MM OR 6MM.
5. PANEL MATERIAL TO BE COMPOSITE WITH A 3105-H14 ALUMINUM FACE .020" MINIMUM THICKNESS WITH POLYETHYLENE OR THERMOPLASTIC FIRE RETARDANT CORE.
6. MAXIMUM PANEL SIZE: 60" X 120"
7. PANELS MAY BE OBTAINED FROM THE FOLLOWING MANUFACTURERS AND UNDER THESE BRAND NAMES:  
ALPOLIC BY MITSUBISHI  
REYNOBOND BY ALCOA  
ALUCOBOND BY 3M  
LARSON BY ALUCOIL
8. SHIM AS REQUIRED AT EACH INSTALLATION ANCHOR WITH LOAD BEARING SHIM. SHIM WHERE SPACE OF 1/16" OR GREATER OCCURS.
9. FOR ANCHORING INTO METAL STRUCTURE USE #12 SMS OR SELF DRILLING SCREWS WITH SUFFICIENT LENGTH TO ACHIEVE 3 THREADS MINIMUM BEYOND STRUCTURE INTERIOR WALL. LOCATE ANCHORS 3" MAX FROM EACH END AND 16" MAX O.C. THEREAFTER AS SHOWN IN ELEVATIONS AND INSTALLATION DETAILS.
10. FOR ANCHORING PANELS INTO EXTRUSIONS USE 1/8" 5052 ALUMINUM POP RIVETS. LOCATE RIVETS 3" MAX FROM EACH END AND 16" MAX O.C. THEREAFTER AS SHOWN IN ELEVATIONS AND INSTALLATION DETAILS.
11. ALL FASTENERS TO BE CORROSION RESISTANT.
12. INSTALLATION ANCHORS SHALL BE INSTALLED IN ACCORDANCE WITH ANCHOR MANUFACTURER'S INSTALLATION INSTRUCTIONS AND ANCHORS SHALL NOT BE USED IN SUBSTRATES WITH STRENGTHS LESS THAN THE MINIMUM STRENGTH SPECIFIED BELOW:  
A. METAL STRUCTURE: GALVANIZED STEEL 16GA FY: 50KSI MIN.

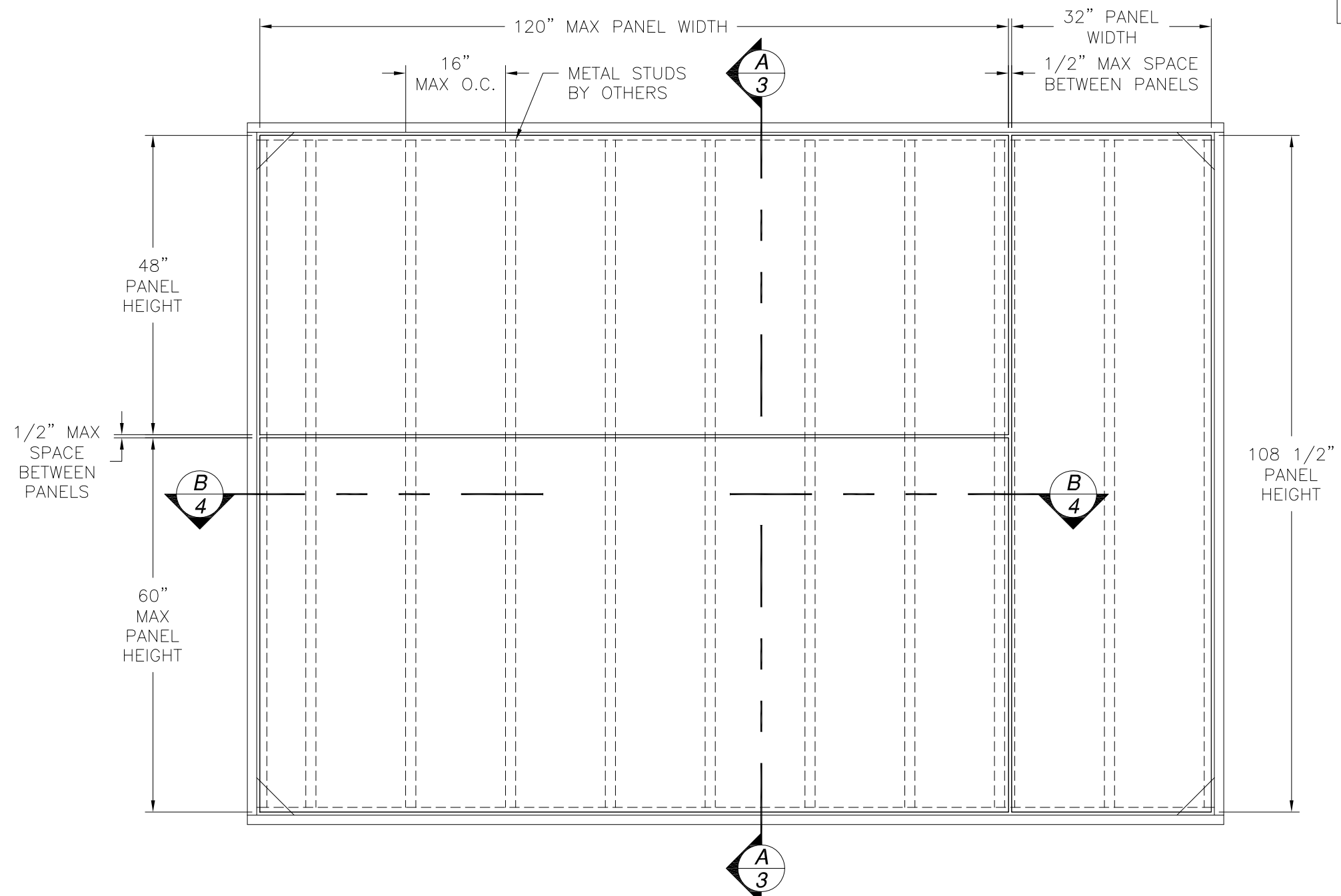
SIGNED: 12/30/2013

TABLE OF CONTENTS	
SHEET NO.	DESCRIPTION
1	NOTES
2 - 3	ELEVATION, CHART
3 - 5	INSTALLATION DETAILS AND COMPONENTS

<b>ALTECH PANEL SYSTEMS LLC</b> 1 JOHNSON STREET, SUITE 118 CARTERSVILLE, GA 30120		
ACCU-TRAC SYSTEM BY ALTECH/ALPOLIC/ALPOLIC FR NOTES		
DRAWN: J.L.	DWG NO. 08-02268	REV -
SCALE NTS	DATE 12/30/13	SHEET 1 OF 5



REVISIONS			
REV	DESCRIPTION	DATE	APPROVED

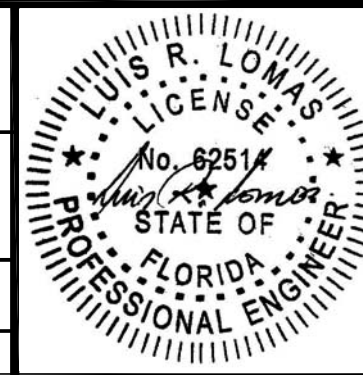


**ACCU-TRAC SYSTEM BY ALTECH/ALPOLIC/ALPOLIC FR**  
EXTERIOR VIEW

DESIGN PRESSURE RATING	IMPACT RATING
±50.0PSF	LARGE AND SMALL MISSILE IMPACT

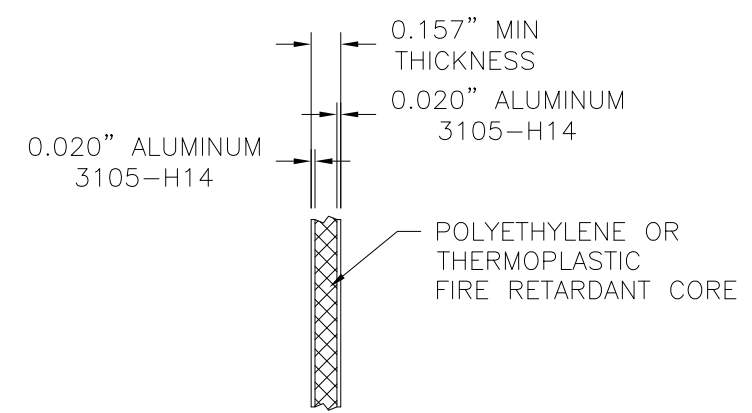
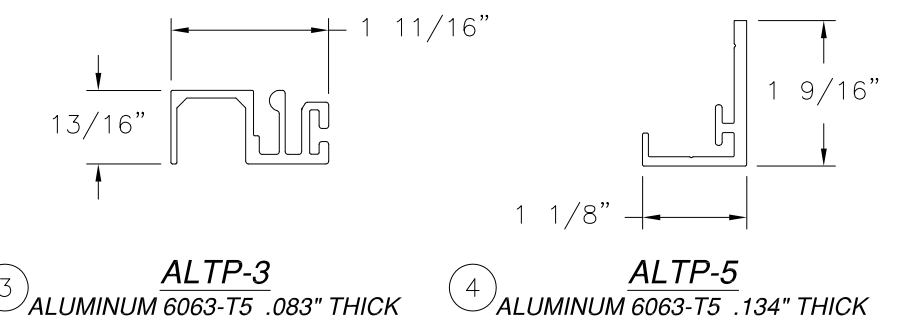
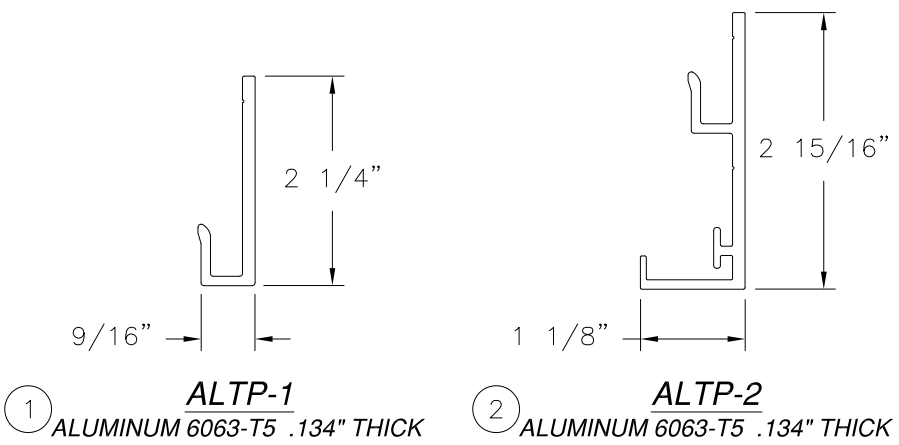
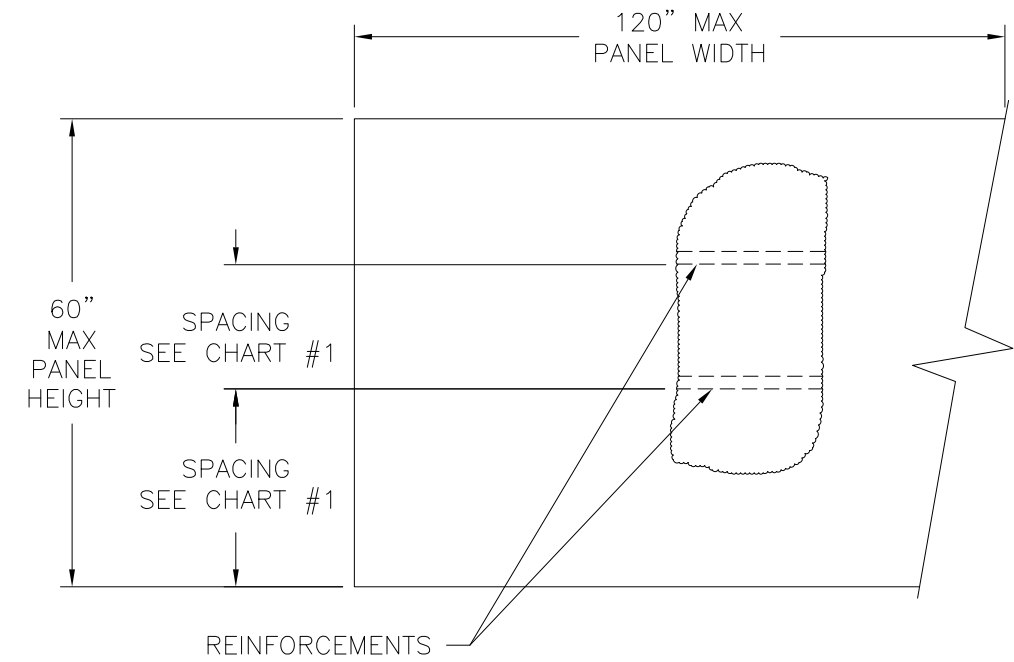
MISSILE LEVEL D, WIND ZONE 4 AND HVHZ  
WITHOUT REINFORCEMENTS  
REFER TO CHART #1 SHEET 3 FOR PANELS WITH REINFORCEMENTS RATINGS

ALTECH PANEL SYSTEMS LLC 1 JOHNSON STREET, SUITE 118 CARTERSVILLE, GA 30120		
ACCU-TRAC SYSTEM BY ALTECH/ALPOLIC/ALPOLIC FR ELEVATION		
DRAWN: J.L.	DWG NO. 08-02268	REV -
SCALE NTS	DATE 12/30/13	SHEET 2 OF 5



BILL OF MATERIALS				
ITEM NO.:	PART NUMBER	DESCRIPTION	MANUFACTURER	MATERIAL
1	ALTP-1	Extrusion Die	Altech	ALUMINUM 6063-T5
2	ALTP-2	3" x 3" Die	Altech	ALUMINUM 6063-T5
3	ALTP-3	Extrusion Die	Altech	ALUMINUM 6063-T5
4	ALTP-5	Extrusion Die	Altech	ALUMINUM 6063-T5
5		4MM Panel	See Note 7	COMPOSITE
6		6MM Panel	See Note 7	COMPOSITE
7		#8 X 3/4" Self Drilling Screw		
8		Reinforcement	Altech	ALUMINUM 6063-T5

REVISIONS			
REV	DESCRIPTION	DATE	APPROVED



⑥ ⑤ **PANEL DETAIL**

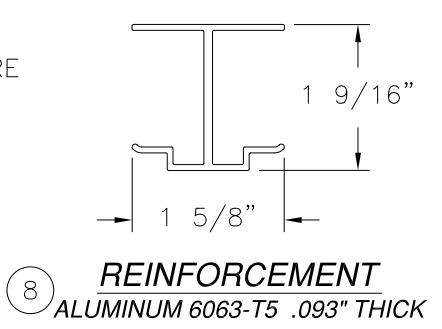


CHART #1  
REINFORCEMENTS ARE NOT REQUIRED FOR DESIGN PRESSURES OF 50.0PSF OR LESS

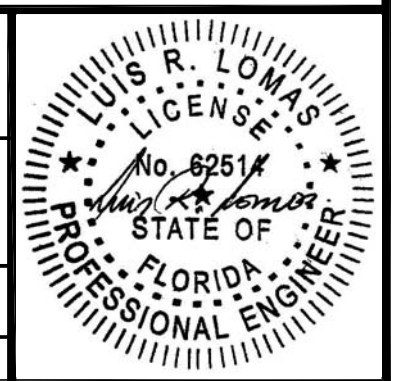
Reinforcement spacing (in)	Maximum design pressure capacity chart (psf)																			
	Panel width (in)																			
	66.0		72.0		78.0		84.0		90.0		96.0		102.0		108.0		114.0		120.0	
	Pos	Neg	Pos	Neg	Pos	Neg	Pos	Neg	Pos	Neg	Pos	Neg	Pos	Neg	Pos	Neg	Pos	Neg	Pos	Neg
15.0	100.0	169.2	100.0	167.4	100.0	166.0	100.0	164.7	100.0	163.6	100.0	162.7	100.0	161.9	100.0	161.2	100.0	160.6	100.0	160.0
16.0	100.0	160.0	100.0	158.2	100.0	156.7	100.0	155.4	100.0	154.3	100.0	153.4	100.0	152.6	100.0	151.9	100.0	151.2	100.0	150.7
18.0	100.0	144.7	100.0	142.9	100.0	141.3	100.0	140.0	100.0	138.9	100.0	137.9	100.0	137.1	100.0	136.4	100.0	135.7	100.0	135.1
20.0	100.0	132.6	100.0	130.6	100.0	129.0	100.0	127.7	100.0	126.6	100.0	125.6	100.0	124.7	100.0	124.0	100.0	123.3	100.0	122.7
24.0	100.0	114.6	100.0	112.5	100.0	110.8	100.0	109.4	100.0	108.2	100.0	107.1	100.0	106.3	100.0	105.5	100.0	104.8	100.0	104.2
27.0	100.0	104.8	100.0	102.6	100.0	100.8	99.3	99.3	98.0	98.0	97.0	97.0	96.0	96.0	95.2	95.2	94.5	94.5	93.9	93.9
30.0	97.1	97.1	94.7	94.7	92.9	92.9	91.3	91.3	90.0	90.0	88.9	88.9	87.9	87.9	87.1	87.1	86.4	86.4	85.7	85.7

ALTECH PANEL SYSTEMS LLC  
1 JOHNSON STREET, SUITE 118  
CARTERSVILLE, GA 30120

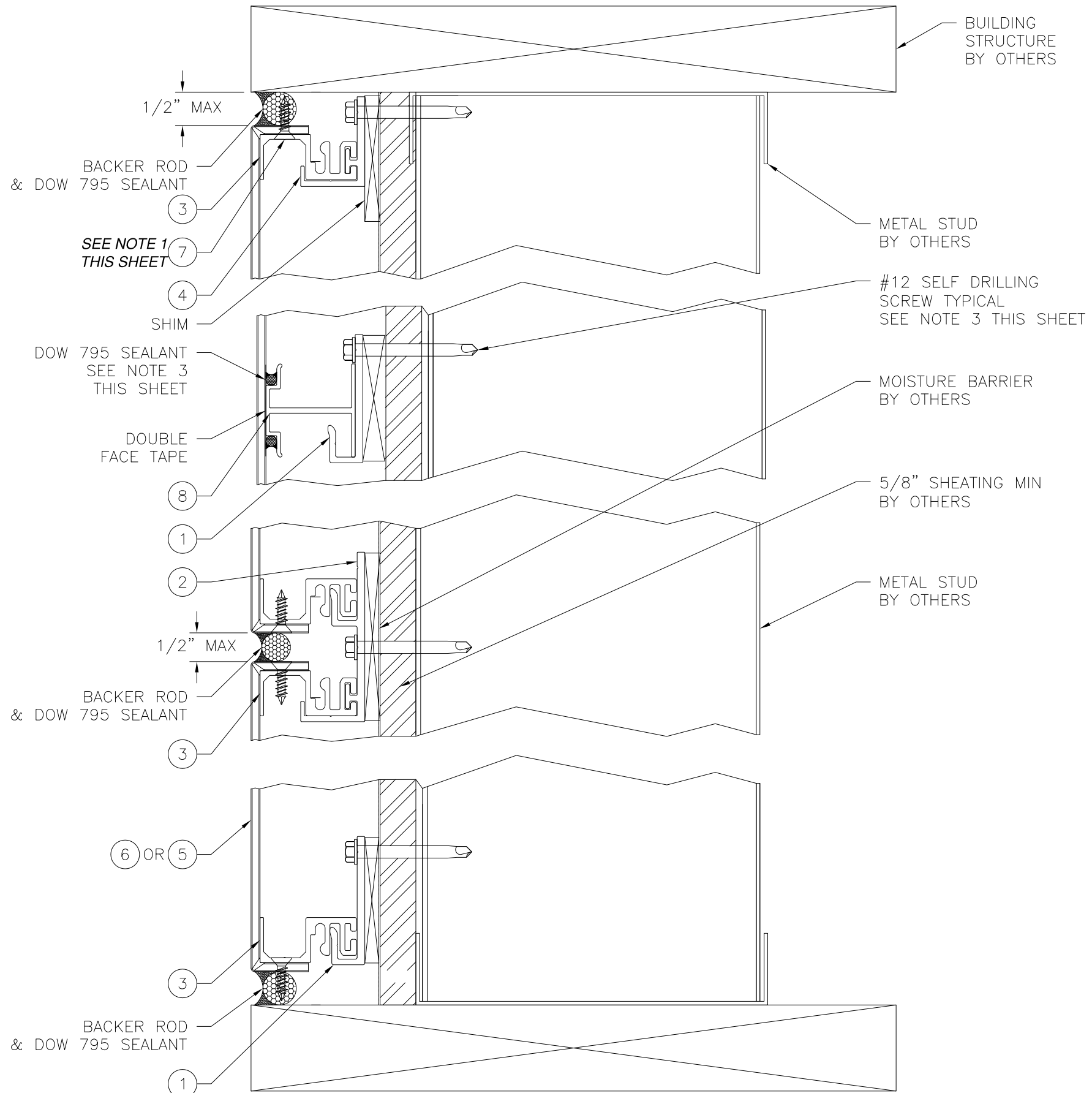
ACCU-TRAC SYSTEM  
BY ALTECH/ALPOLIC/ALPOLIC FR  
B.O.M., INSTALLATION DETAILS AND COMPONENTS

DRAWN: J.L.      DWG NO. 08-02268      REV -

SCALE NTS      DATE 12/30/13      SHEET 3 OF 5



REVISIONS			
REV	DESCRIPTION	DATE	APPROVED



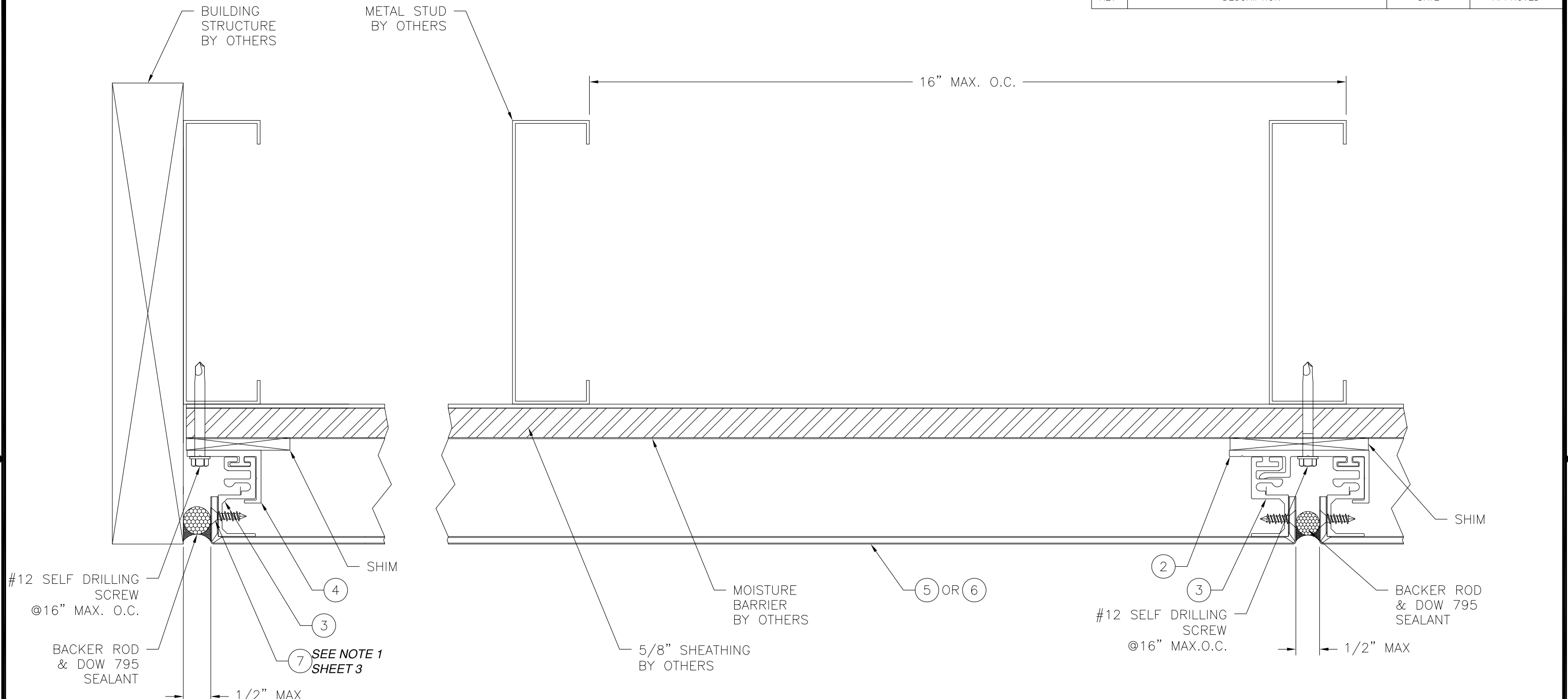
- NOTES:**
- ANCHOR PANEL, ITEMS 5 OR 6 TO PERIMETER EXTRUSION USING ITEM 7. LOCATE ANCHORS 3/4" FROM EACH CORNER AND 10" MAX O.C. THEREAFTER.
  - LOCATE ANCHORS 3" MAXIMUM FROM EACH PANEL CORNER AND 16" MAXIMUM O.C. THEREAFTER.
  - WHEN REINFORCEMENTS ARE REQUIRED. ATTACH REINFORCEMENT TO PANEL USING DOW 795 OR BETTER STRUCTURAL ADHESIVE. LOCATE REINFORCEMENT ANCHORS 3" MAXIMUM FROM EACH CORNER AND 12" MAXIMUM O.C. THEREAFTER.

**A**  
**3** VERTICAL SECTION  
INSTALLATION DETAILS

ALTECH PANEL SYSTEMS LLC 1 JOHNSON STREET, SUITE 118 CARTERSVILLE, GA 30120		
ACCU-TRAC SYSTEM BY ALTECH/ALPOLIC/ALPOLIC FR B.O.M., INSTALLATION DETAILS AND COMPONENTS		
DRAWN: J.L.	DWG NO. 08-02268	REV -
SCALE NTS	DATE 12/30/13	SHEET 4 OF 5



REVISIONS			
REV	DESCRIPTION	DATE	APPROVED



**B**  
**4** HORIZONTAL SECTION  
INSTALLATION DETAILS

ALTECH PANEL SYSTEMS LLC  
1 JOHNSON STREET, SUITE 118  
CARTERSVILLE, GA 30120

ACCU-TRAC SYSTEM  
BY ALTECH/ALPOLIC/ALPOLIC FR  
INSTALLATION DETAILS

DRAWN: J.L.	DWG NO. 08-02268	REV -
SCALE NTS	DATE 12/30/13	SHEET 5 OF 5

